

FIRST TERM

SUBJECT: MUSIC

CLASS: JSS 3

WEEK ONE

REVISION EXERCISE

- 1 The stem or flag are not used when writing a _____
- 2 which of the notes is represented twice in the scale? _____
- 3 How many beats make a semibreve note? _____
- 4 A minim note is equal in duration to _____ quaver notes
- 5 Music is divided into measure by the used of vertical line called _____
- 6 _____ is the center of the piano
- 7 There are _____ accidental signs used in music
- 8 A flat sign lowers a note by a _____
- 9 lines and spaces of the staff is meaningless until a _____ is placed at the beginning

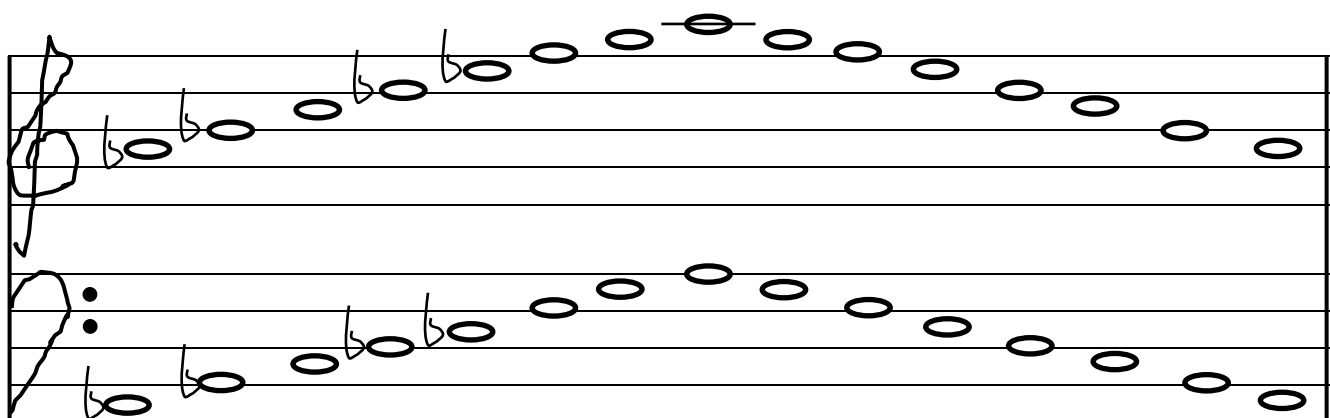
10 How many tetrachord are there in a major scale?

WEEK TWO

CONSTRUCTION OF SCALE A FLAT, D FLAT AND G FLAT

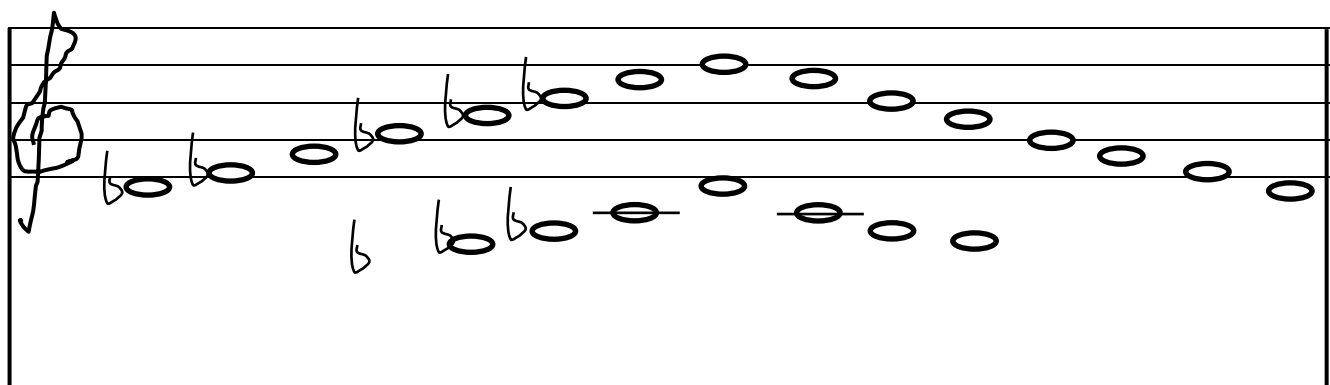
In our previous lesson, we discussed the diatonic scale as a ladder running from its tonic to its octave. Its only diatonic scale that consists of eight notes and it should be noted that the principle of construction is : T,T,S,T,T,T,S .

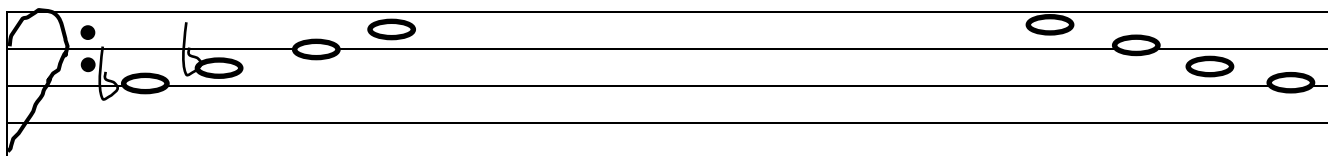
A flat major



A^b B^b C D^b E^b F G A

D flat Major





D^b

E^b

F

G^b

A^b

B^b

C

D

G flat major...